



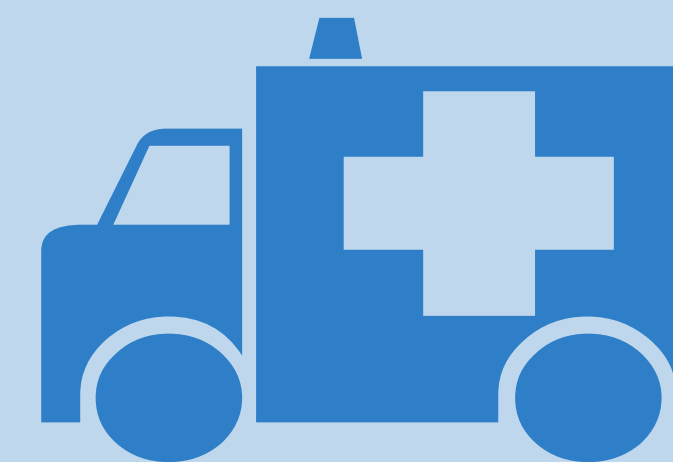
Burden of Ill Health and Premature Mortality

Premature mortality

(1)
Cancer is the main cause of death for those under 75. During 2015 119.5 per 100,000 under 75s died from cancer in Wiltshire (546 people) compared to 136.4 in England.



(2)
147.1 per 100,000 people died from causes considered preventable in Wiltshire compared to 184.5 in England



(1)
57.9 per 100,000 under 75s died from cardiovascular disease in Wiltshire (263 people) compared to 74.0 per 100,000 in England.

Mortality in the under 75s from all three of these causes has been falling for at least 6 years.



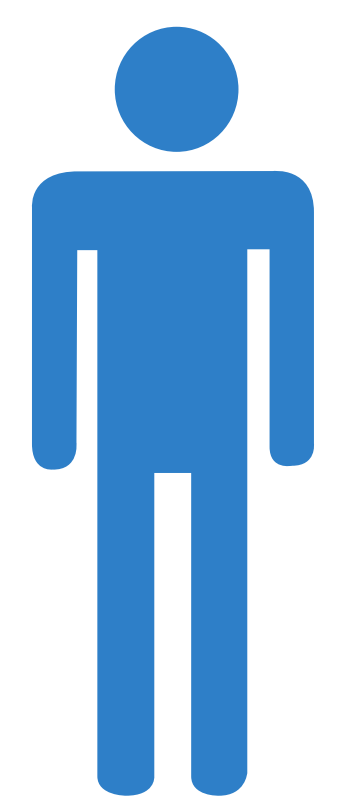
All three of these causes of mortality have higher rates in the most deprived quintile in Wiltshire





Burden of Ill Health and Premature Mortality

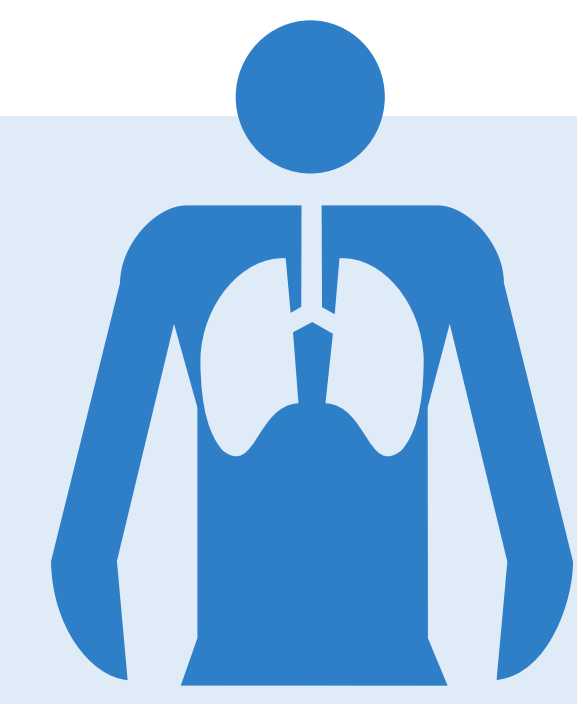
Types of Cancer



(1)
In Wiltshire prostate cancer has the highest directly standardised mortality rate with 50.7 per 100,000 men dying from prostate cancer. This is a similar directly standardised rate to England (49.6 per 100,000).



(1)
In Wiltshire lung cancer is the second highest directly standardised rate of cancer deaths (45.4 per 100,000). This is a much smaller directly standardised rate than England (57.6 per 100,000).



(1)
The rate of mortality from breast cancer is the third highest from cancer in Wiltshire. 35.8 per 100,000 females in Wiltshire which is a similar rate to England (34.3 per 100,000).

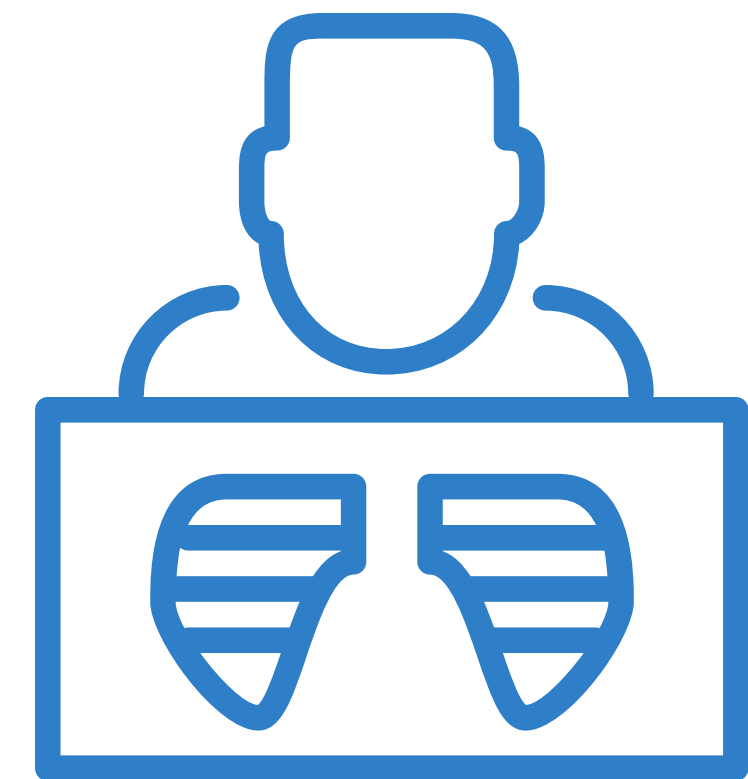
(2)
Breast cancer had the highest incidence of all the types of cancer. In Wiltshire 123.1 per 100,000 women were diagnosed with breast cancer. This is slightly more than England (116.2 per 100,000).



Burden of Ill Health and Premature Mortality

Prevalence of disease

(1)
30,590 people registered with a Wiltshire GP surgery have asthma. This represents 6.3% of the registered population, compared to 6% in England.



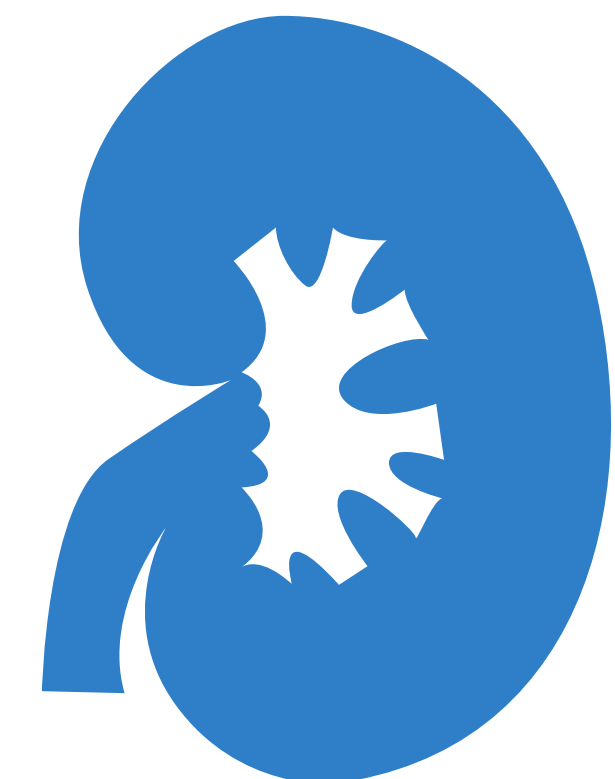
(1)

23,860 people aged 17+ registered with a Wiltshire GP surgery have diabetes. This is a prevalence rate of 6.1%, compared to 6.5% in England.



(1)

14,813 people aged 18+ registered with a Wiltshire GP surgery have chronic kidney disease. This is a prevalence rate of 3.9%, compared to 4.1% in England





Burden of Ill Health and Premature Mortality

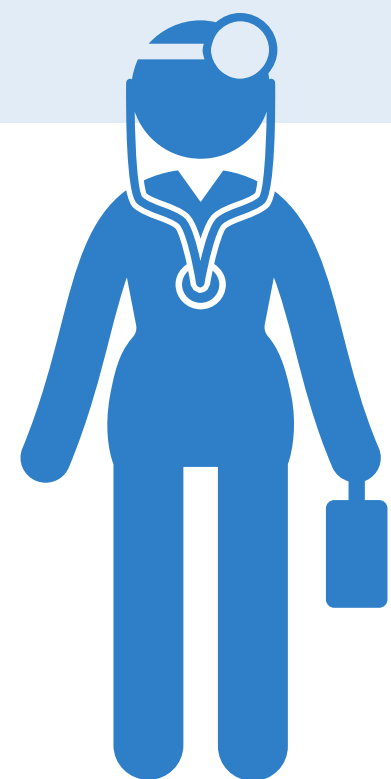
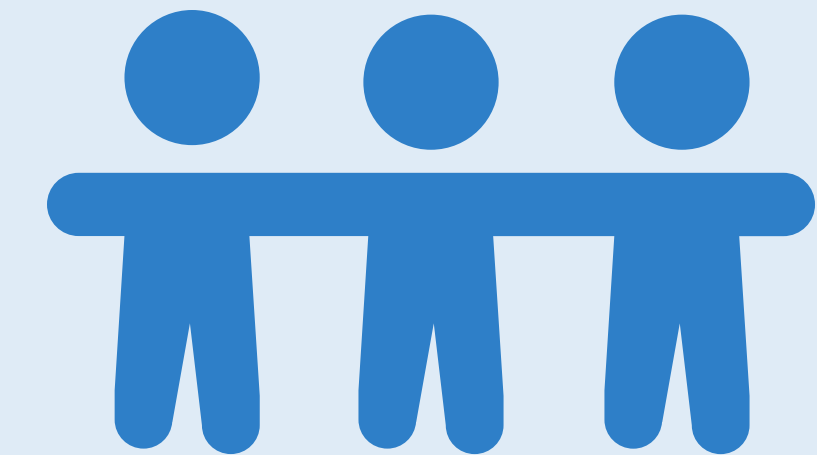
Mental Health



(1)
67,000 adults in Wiltshire are estimated to have a common mental disorder comprising different types of anxiety and depression

(2)
The Wiltshire Children and Young People's Health and Wellbeing Survey assessed Wiltshire's school-age children on the Warwick-Edinburgh Mental Wellbeing Scale and found poor or very poor mental wellbeing in:

9.9% of primary school pupils
24.1% of secondary school pupils
31.7% of year 12/FE pupils

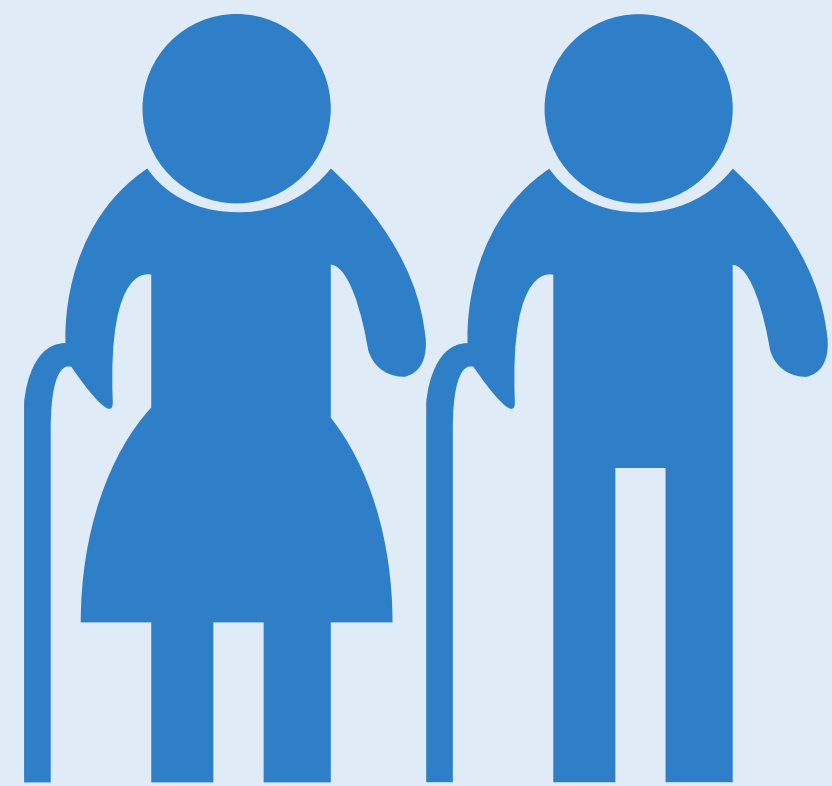


(1)
4.4% of the adult population are estimated to suffer from Post Traumatic Stress Disorder (PTSD) - an estimated 15,000 people in Wiltshire are undiagnosed



Burden of Ill Health and Premature Mortality

Accidents and Injuries



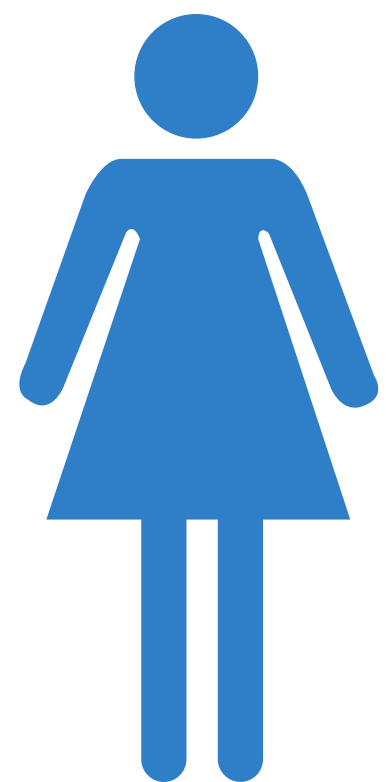
Falls are one of the largest causes of emergency hospital admissions in older people in England.

In Wiltshire, the directly standardised rate of falls-related emergency admissions in those aged 65+ is 1926.8 per 100,000 people. This is a lower rate than in England as a whole (2133.2).⁽¹⁾

Wiltshire's directly standardised rate is much higher for women than for men (2267 for women and 1453.3 for men)

164.6 per 10,000 young people aged 15-24 were admitted to hospital for unintentional or deliberate injuries in Wiltshire in 2015/16⁽²⁾

This compares to 134.1 in England



Females were predominantly admitted for intentional injuries

Males were predominantly admitted for unintentional injuries



1,089 all-age hospital admissions in 2015/16 in Wiltshire were caused by intentional self-harm⁽²⁾



Higher rates among females and those living in more deprived areas⁽¹⁾